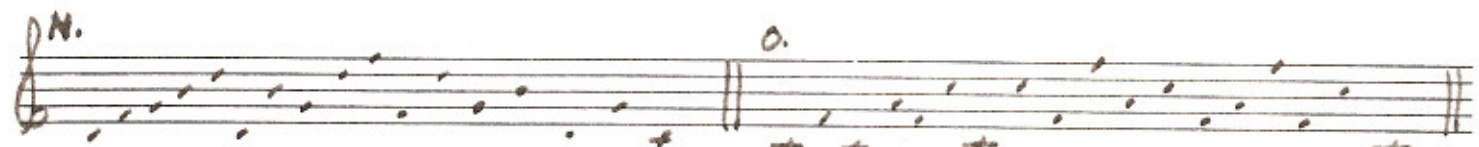


SOLFEGE (cont'd)

VARIATIONS:

Other Ways to Practice

I. Add accidentals periodically so as to cover all "Key" possibilities.

II. Conduct at all times.

III. VARIATIONS L, M, N, O and P should be conducted in $\frac{3}{4}$ and $\frac{4}{4}$

NOTE

1. VARIATIONS A through K should be exercised by following their directions from the triad structure.
2. The Eslava Método de Solfeo by H. Eslava (Completo) is highly recommended for sight-reading material.
3. The "Fixed" Do system is strongly advised.